

Indication of operation

Display for operating status, warnings, errors

Standard programme ②

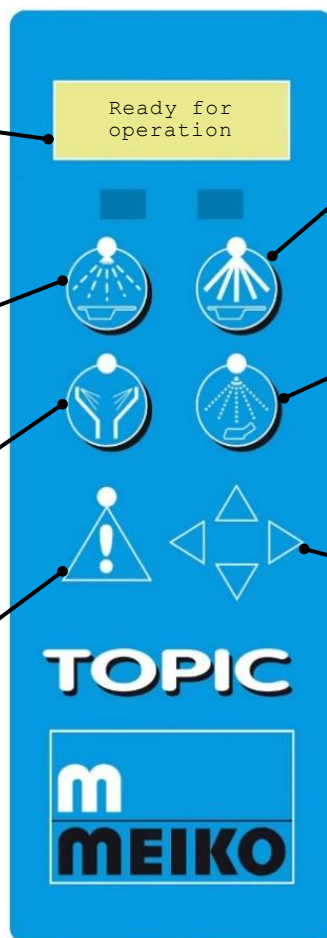
Cleaning and disinfection of soiled care utensils

Slop sink flushing

(for separate slop sink unit)
Wash chamber rinsing option

Display

Notify technical service in case of warning or error
Acknowledge key acknowledges errors / switches off signal



Intensive programme ③

Cleaning and disinfection of heavily soiled care utensils

Short programme ①

Cleaning and disinfection of slightly soiled care utensils (e.g. urine bottles)

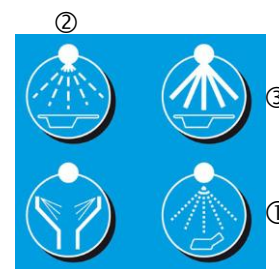
Cursor field

▲ ▼ keys for number of programme runs,
◀ ▶ keys, see detailed instructions for use

Select disinfection performance (A_0 values) (option)



1. Place the washware in the intended positions in the holder for care utensils and urine bottle and close the wash chamber door.



2. Select the cleaning programme corresponding to dirt. Press the programme key. The programme starts with the preset A_0 -value automatically.



3. ALTERNATIVE

Hold the programme key until the desired value A_0 is displayed centrally in []. Then immediately release the programme key. The programme starts automatically.