

MEIKO rack range

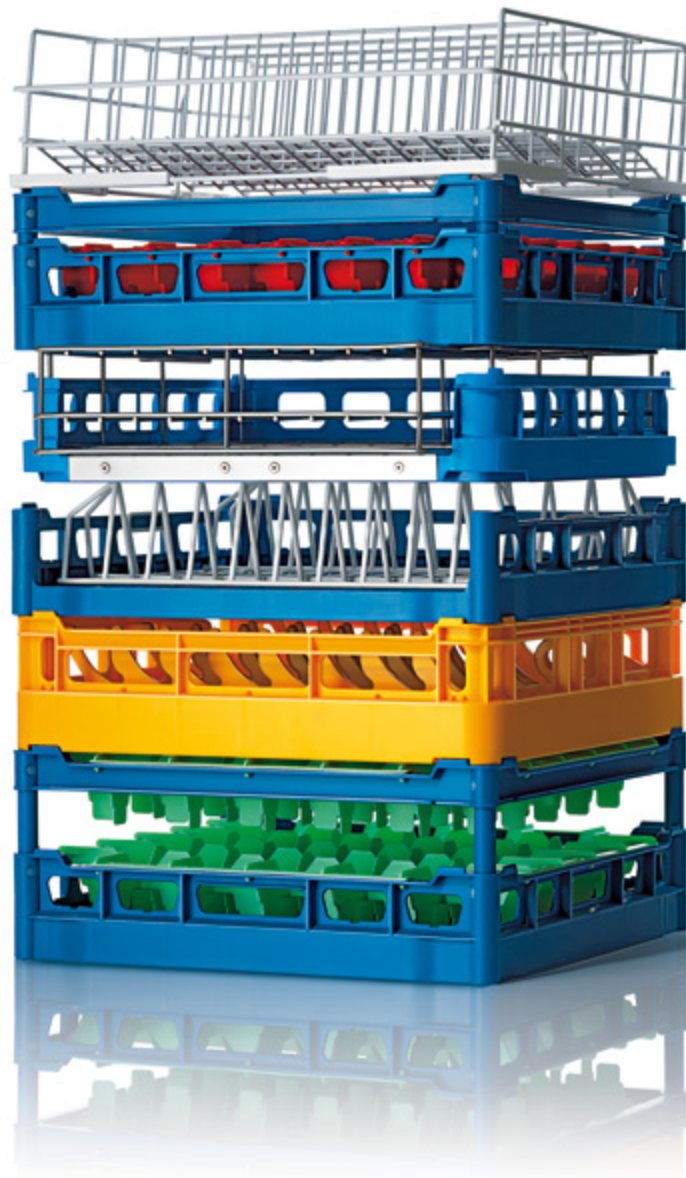
To help you streamline your warewashing processes



The MEIKO rack system



The MEIKO rack system comprises a diverse range of racks to suit any washware: from finger racks for plates, cups and saucers, through to racks specially designed for glasses and trays, not to mention cutlery baskets. The tried-and-tested quality of the polypropylene we use for our plastic racks makes them incredibly sturdy and resilient. With our racks you can be flexible about what goes in. The rack will protect your washware but still let through plenty of water.



Forget hip, it's practical to be square!

MEIKO racks for any type of dishes

MEIKO racks for all MEIKO glass and dishwashers,
rack size 500 x 500 mm.

The pegs in our universal racks are placed two different distances apart to cater for diverse types and sizes of plate. Our pegs are specially shaped and we include no-tip barriers so that larger washware, in particular, can be included and all washware is perfectly angled for the best possible wash. The base of the rack features ribbing designed to be beneficial to the flow of water and allow it to pass through the rack.

All 500 x 500 mm plastic racks can be stacked together to save space and feature handles in the rack frame for easy handling.

White, polyamide-coated stainless steel racks are also available in the standard 500 mm size for diverse washware. Many of the racks shown here are also suitable for use in rack type or flight type dishwashing machines.



VKV 50/1 plate rack
for plates, dishes, cups, saucers



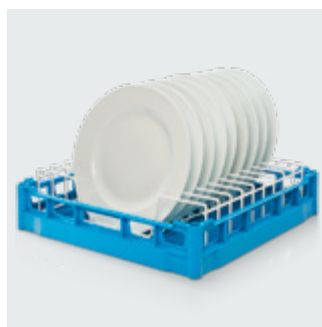
UV 46 x 46/1 cover screen,
White, polyamide coated, prevents lightweight items from lifting out of VKV 50/2 or VKV 50/2 BK small parts rack



VKV 50/2 small parts rack
used as base rack for BKO cutlery basket
VKV 50/2 BK (close mesh)
small parts rack for small cutlery



TAV rack insert for cups,
white, polyamide coated,
with sloping rows for
VKV 50/2 small parts rack



NK base rack with PTE insert
for 9 large plates, white insert, polyamide coated



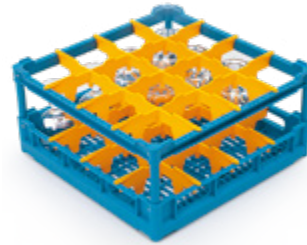
GV 50/25 glass rack
with 5 removable stacking rows (to tilt glasses)



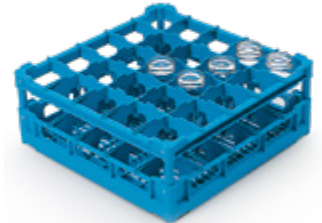
NK 110 universal base rack,
clearance 110 mm;
NK 130, clearance 130 mm;
can also be used as base
rack for cutlery basket



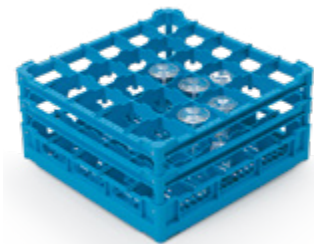
P 15 plate rack
for 15 large plates, suitable
for plates with min.dia
180 mm



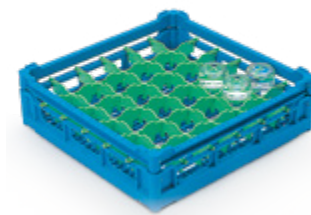
VKV 50/G 416 glass rack
for 16 glasses,
max. glass dia.: 113 mm,
max. glass height: 160 mm



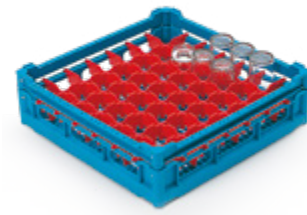
VKV 50/G 516 glass rack
for 25 glasses,
max. glass dia.: 90 mm,
max. glass height: 160 mm



VKV 50/G 521 glass rack
for 25 glasses,
max. glass dia.: 90 mm,
max. glass height: 210 mm



VKV 50/G 611 glass rack
for 36 glasses,
max. glass dia.: 74 mm,
max. glass height: 110 mm



VKV 50/G 711 glass rack
for 49 glasses,
max. glass dia.: 63 mm,
max. glass height: 110 mm



Glass racks
white, polyamide coated
4 rows, glasses up to
110 mm in dia.
GV 50/22 (rack height
150 mm),
GV 50/20 (rack height
220 mm)



GV 50/17 universal rack,
white, polyamide coated,
for glasses, cups, saucers,
plates up to 200 mm in dia.
and cutlery



UV 50/5 tray rack
White, polyamide coated, for
530 x 325 mm GN trays and
large, flat plates

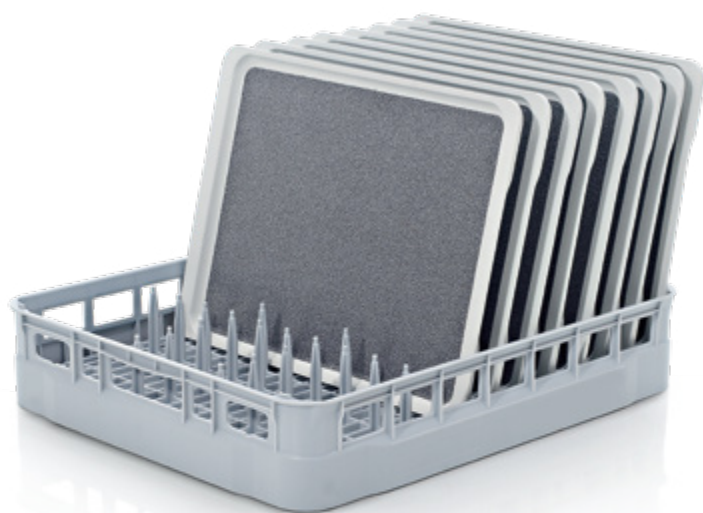


Drip tray
for racks measuring
500 x 500 mm

5 rows, glasses up to
90 mm in dia.
GV 50/23 (rack height
150 mm)
GV 50/21 (rack height
220 mm)

Imbued with versatility:
Every item has its proper place

MEIKO racks for all MEIKO glass and dishwashers,
rack size 600 x 500 mm.



VKV 60/3 tray rack
for 12 small trays or 10 GN trays
For M-iClean UL/HL



VKV 60/2 small parts rack
Base rack for cutlery baskets,
pots, bowls, kitchen utensils, cups
For M-iClean UL/HL



VKV 60/1 plate rack for 22 plates, or 24 flat plates. Offset rack design ensures plates up to approx. 28 cm in diameter do not touch each other. Flat (pizza) plates up to 32 cm in diameter.
For M-iClean UL/HL

MEIKO racks for MEIKO compact glass and dishwashers,
rack size 400 x 400 mm.



VKV 40/14 glass rack
wide meshed, rack height
200 mm with compartments
for 16 glasses



VKV 40/15 glass rack
wide meshed, rack height
260 mm with compartments
for 16 glasses



GV 40/10 universal rack
white, polyamide coated,
with sloping base for glasses
up to 97 mm, plates, sau-
cers, plates up to 200 mm in
dia., rack height 220 mm



UV 40/3 universal rack
white, polyamide coated,
for glasses, cups, saucers,
plates up to 200 mm in dia.
and cutlery



VKV 40/4 base rack
close meshed, height
150 mm



GV 40/15 glass rack
with 4 removable stacking
rows (to tilt glasses)



GV 40/9 glass rack
white, polyamide coated, with sloping base and 4 rows for
glasses up to 96 mm in dia., rack height 150 mm

GV 40/12 glass rack
white, polyamide coated, with sloping base and 3 rows for
glasses up to 121 mm in dia., rack height 150 mm



VKV 40/7 plate insert
for 10 plates, designed to fit
in VKV 40/4 base rack



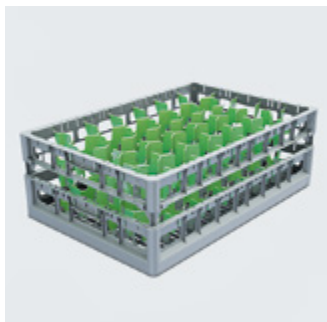
Drip tray
for racks measuring
400 x 400 mm

Tailored for the most diverse of washware

MEIKO racks for utensil washers. Robust and durable stainless steel design. Wheels for easy handling even when loaded with heavy washware.



VKV 60/T plate rack
Base rack, 600 x 400 mm,
with insert for large plates,
white, polyamide coated,
8 rows, plate dia. up to
320 mm
For M-iClean UL/HL



VKV 60/G glass rack
rack size 600 x 400 mm,
compartments for 15–40
glasses and for different
heights of glass
For M-iClean UL/HL



TV 50-22 rack
made from stainless steel
for 8 display trays
(600 x 400 mm)
For M-iClean UL



TV 65 x 50/1 plate rack,
white, polyamide coated,
8 rows (650 x 500 mm,
plate dia. up to 320 mm
For M-iClean HL



BV 60 x 50/8 rack
for 8 display trays/platters/
trays (max. 650 x 530 mm,
GN 2/1) made from stainless
steel
For M-iClean HL



BV 60 x 50/9 rack
to tilt transport containers
(600 x 400 mm), made from
stainless steel
For M-iClean HL



BV 85 x 70/1 rack with wheels
(850 x 700 mm), made from solid stainless steel
For FV 130.2



BV 57 x 56 (570 x 560 mm)
solid stainless steel rack
insert for 2–8 GN contain-
ers, 1/2–1/1 (max. 65, 100,
150 mm depth)
For FV 130.2/FV 250.2/DV 270.2



UV 67 x 39 universal insert
(670 x 390 mm) made from
solid stainless steel
For FV 130.2/FV 250.2/DV 270.2



BV 60 x 50/10 rack
for GN containers, 2/1, (max.
150 mm depth) made from
solid stainless steel

For M-iClean HL



BV 60 x 39 rack insert
(608 x 390 mm) made from
solid stainless steel

For FV 130.2/FV 250.2/DV 270.2



Rack inserts for baking trays

made from solid stainless steel (600 x 500 mm)

Baking tray depth up to 70 mm = 6 trays, BV 60 x 50/3

Baking tray depth 30–50 mm = 9 trays, BV 60 x 50/2

Baking tray depth 20–30 mm = 11 trays, BV 60 x 50/1

For FV 130.2/FV 250.2/DV 270.2



BV 131 x 69/1 rack with wheels

(1,310 x 690 mm), made from solid stainless steel

For DV 270.2



Racks for double rack dishwashing machine M-iClean HXL



BV 100 x 50/1 rack with wheels,

made from solid stainless steel, not suitable for inserting
into 500 x 500 mm base racks, (interior dimensions 970 x
470 mm)

For M-iClean HXL



BV 131 x 70/1 rack with wheels

(1,310 x 700 mm), made from solid stainless steel

For FV 250.2

Further rack types and special racks for all models of machine available on request.

Flawlessly organised for fantastic cleanliness

Cutlery inserts for all MEIKO glass and dishwashers



BKS cutlery basket
with 8 compartments,
430 x 210 mm



CBS cutlery quiver
(also suitable for rack size
400)



Cutlery insert
with 7 compartments with VKV 50/1 universal finger rack



KV 34 x 15/1 cutlery basket
made from perforated stain-
less steel, with 8 compart-
ments (340 x 150 mm)

Racks for EN, GN or warmer trays



VKV 50 TKT tray rack for GN trays, with lateral cutout and
stainless steel reinforced edges



**NK base rack with NKT
insert**
for 9 trays, cutout on one
side, white insert, polyam-
ide coated



**NK base rack with WHT
insert**
for 4 warmer trays, cutout
on one side, stainless steel
insert

Optimise your logistics: the perfect accessories for rack storage and transport



We are able to furnish glass racks with sloping inserts on request. These help water to drain out of your glassware.



Rack storage unit to be installed under table, can be individually adjusted for different rack heights



ROLB 500 Platform trolley with drip tray and push handle



Protective cover
Height: 1.6 m

A person wearing a blue jacket is opening a white dishwasher. The dishwasher door is open, revealing the interior racks. In the bottom rack, there are several reusable cups, including a green one and a pink one. The person's hand is visible, reaching into the rack. The background is a plain wall.

REUSABLE

IS THE FUTURE



The clean way

The MEIKO bottle washing system

Take the professional path to a cleaner future with reusable bottles. Nearly every industry is in the process of introducing more reusable bottles – the sustainable solution for people and planet.

Glass and plastic bottles can be used and washed many times – saving valuable resources and making an active contribution to environmental conservation. The best part? It is easy to switch between washing bottles and standard washware technology by MEIKO. The clever MEIKO bottle rack and adapter are a simple, efficient, patent-pending solution for all standard bottle sizes and shapes.

Take a look at the benefits:

- Bottles washed to hygienically safe standards (in accordance with DIN 10511)
- Significant payroll and time savings compared to manual bottle washing
- Can be retrofitted to any MEIKO *M-iClean UM/UM+*
- Easy to switch between washing bottles and standard washware
- Suitable for glass and plastic bottles up to 114 mm in diameter and 245 mm in height (*M-iClean UM*) or 370 mm in height (*M-iClean UM+*). The bottle opening should measure 18-80 mm in diameter.
- **Compatible with all MEIKO *M-iClean UM* and *UM+* machines**
Cleans **up to 640 bottles per hour**.



Bottle rack without adapter

Plastic, for 16 bottles
Plastic nozzles with stainless steel inserts
Max. bottle height: 355-370 mm (*M-iClean UM+*), depends on bottle opening
Interior bottle neck diameter: 18-80 mm
Max. bottle diameter 114 mm



Bottle rack with adapter

Plastic, for 16 bottles
Plastic nozzles with stainless steel inserts
Max. bottle height: 355-370 mm (*M-iClean UM+*), depends on bottle opening
Interior bottle neck diameter: 18-80 mm
Max. bottle diameter 114 mm



Start washing reusable dishware with MEIKO: Clean solutions by the rack full!

Take the path to a cleaner future with reusable bottles.

Our modular rack systems are the perfect way for you to wash your reusable containers and create hygienic, dry processes. To achieve the best possible, most hygienic drying results, we recommend using our rinse aid.

MEIKO ACTIVE KS PL



The MEIKO bowl rack* Our hybrid rack for bowls

This new way to arrange bowls in the machine puts them in the optimum position for cleaning and drying.

- Base: UV 50/5 tray rack, 530 x 325 mm
- Capacity: up to 6 bowls with lids
- Also provides space for a cutlery quiver (CBS)



The MEIKO cup rack* Rack with hold-down grid for reusable cups

The best way to hold cups in place and prevent tipping – even with high water pressure. Cup heights 110–150 mm

- Base: GV 50/22 glass rack, 500 x 500 x 150 mm
- Hold-down grid also available for existing racks
- Handy: the cup rack also works for regular dishes



The MEIKO cup-mix rack* Perfect for cups in different sizes

Position cups using a finger insert to suit a range of sizes. Then hold them in place using a hold-down grid.

- New rack design with finger insert, 500 x 500 mm
- Practical, folding hold-down grid
- Capacity: maximum 25 cups

How you can benefit from MEIKO racks

MEIKO racks are versatile and high performant:
key to getting the most out of your warewashing strategy

So how do you benefit?

- Washware positioned perfectly for the best possible clean
- Water passes through easily to achieve optimum washing results
- Air passes through easily for sparkling drying results
- Versatile: every item has its proper place
- Can be mixed and matched to create personalised rack combinations
- Holds washware reliably and securely in place
- Tailored for the most diverse of washware
- Robust, sturdy and durable
- Racks stack for easy storage
- Quickly find the right rack for the right item
- Universal: wash – transport – store

Complies with the hygiene requirements of DIN SPEC 10534.

