



NEW: MEIKO ACTIVE

More than
meets the eye

MEIKO ACTIVE

More than meets the eye

Chemicals are a necessary part of cleaning. Hygiene, shine, operating costs – everything hinges on proper use and dosing.

But *MEIKO ACTIVE* is more than that – much, much more. Not only is it replacing our previous *MEIKOLON* line of chemicals, it also comes with the most comprehensive full-service package ever seen in MEIKO's long history.

This all-in-one solution brings red-carpet quality to the entire warewashing process. From now on, MEIKO customers can concentrate fully on their core business: their diners and patrons.

Meanwhile, we will take care of safety and hygiene, excellent washing results, reliable premium technology, smart premium service, training for all employees and inspection of your hygiene data.

All from a single source and perfectly tailored to your needs. The secret to our success is our holistic approach to washing, as represented by the *MEIKO Clean Solution Circle* with its 8 parameters. Read on to find out what makes it so special.

Stay ACTIVE!



Extensive
training programme

Consumables
delivered as required



Personalised advice
on washing chemicals



Smart maintenance and
servicing packages

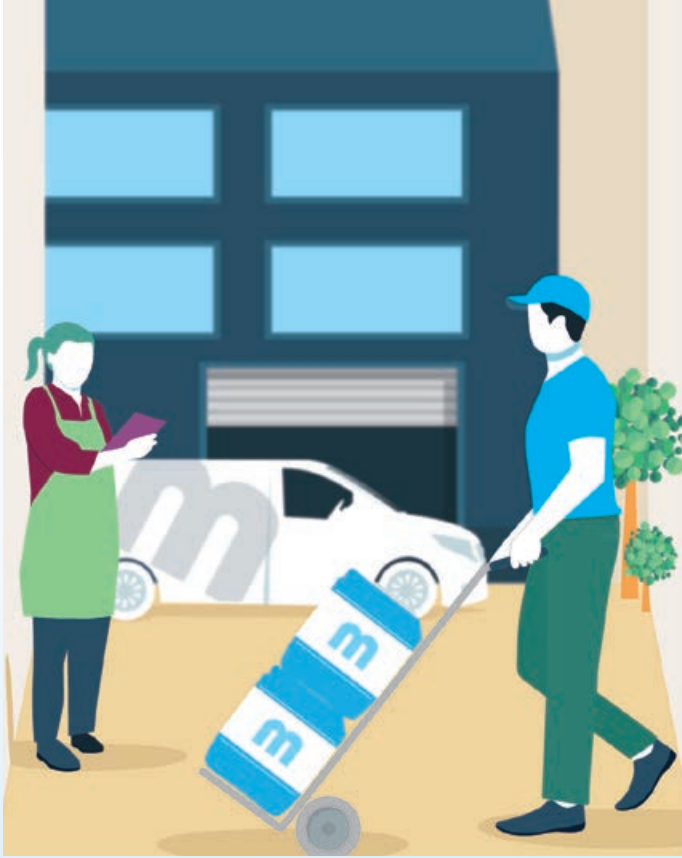


On site
product consultation



Recording of relevant
operational and hygiene data

Choose 'more'. More service, more partnership, more satisfaction, more reliability.
And above all: more synergies.
We bring together all of our strengths to maximise the benefits for you.



Order monitoring for washing chemicals

The only way to achieve sparkling glasses and perfectly polished cutlery is to select the right washing chemicals and ensure precise dosing. We take care of both tasks on your behalf. And you don't need to worry about running out either – thanks to our clever order monitoring system. Your machine will let you know if something is running low, so you can order more stocks in plenty of time and avoid any hold-ups.

Extensive training programme

We have been delivering hygiene, cleanliness and sparkling results for over 90 years – and we have accumulated a wealth of expertise in that time. The *MEIKO Clean Solution Circle* gives you access to this expertise: the *MEIKO Academy* training institution enables us to share our knowledge with you directly. We will turn you and your staff into experts by showing you how to manage the warewashing process in a cost-effective and hygienic manner. And that's just the start of what we have to offer with regard to training.



Smart maintenance and servicing packages

Having problems with your washing results? Then there's no time to lose! The hard truth is that, without washing, business will grind to a halt. But we won't let it get to that stage. Our maintenance work and inspections will keep your machines match-fit for many years. *We solve* problems before they even arise. And if things do go wrong, we will be there to help. Fast and smart – the machine itself will know what needs fixing and will be ready for operation again in no time.

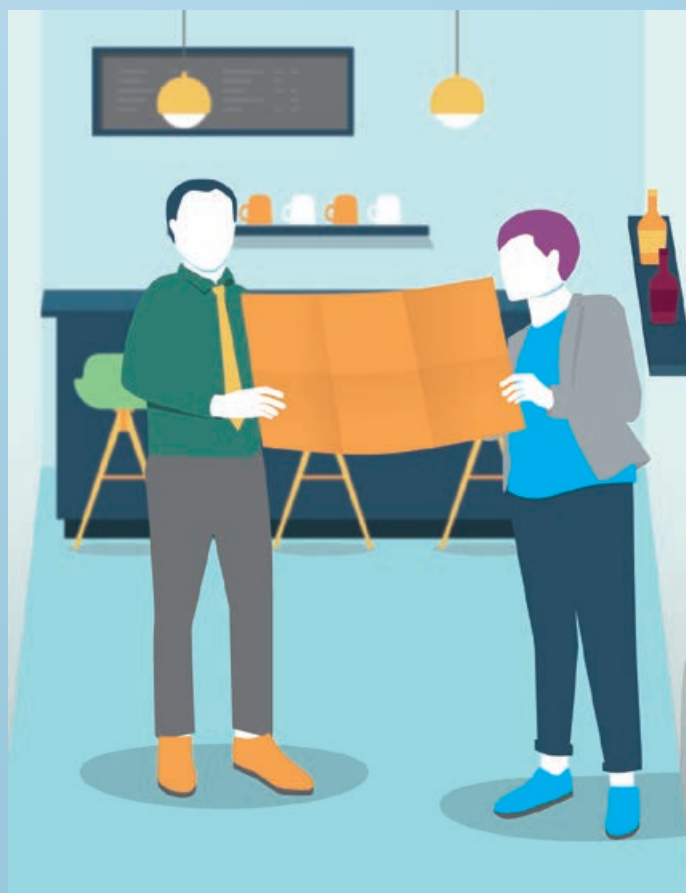


Optimised washing chemicals

Your business, your warewashing technology, your chemicals! So simple and yet so fundamental – finding the right combination of machine, water conditions and washing chemicals is the only way to achieve perfect, long-lasting results. We will bring all of these factors together and tailor them to your needs, allowing you to exploit the full potential of your dishwashing area and maximise the benefits for your patrons, your warewashing technology and your wallet.

Keeping track of hygiene data

A brilliant shine is one thing, but hygiene is another thing entirely, and today it is more important than ever. As the operator, you are responsible for the safety and security of your patrons – and you can rely on *MEIKO ACTIVE* to help you in a number of ways. For example, all operational data and hygiene data for your warewashing processes can be called up at any time. Communication between people and machines must be simple, and we speak the language of our technology.

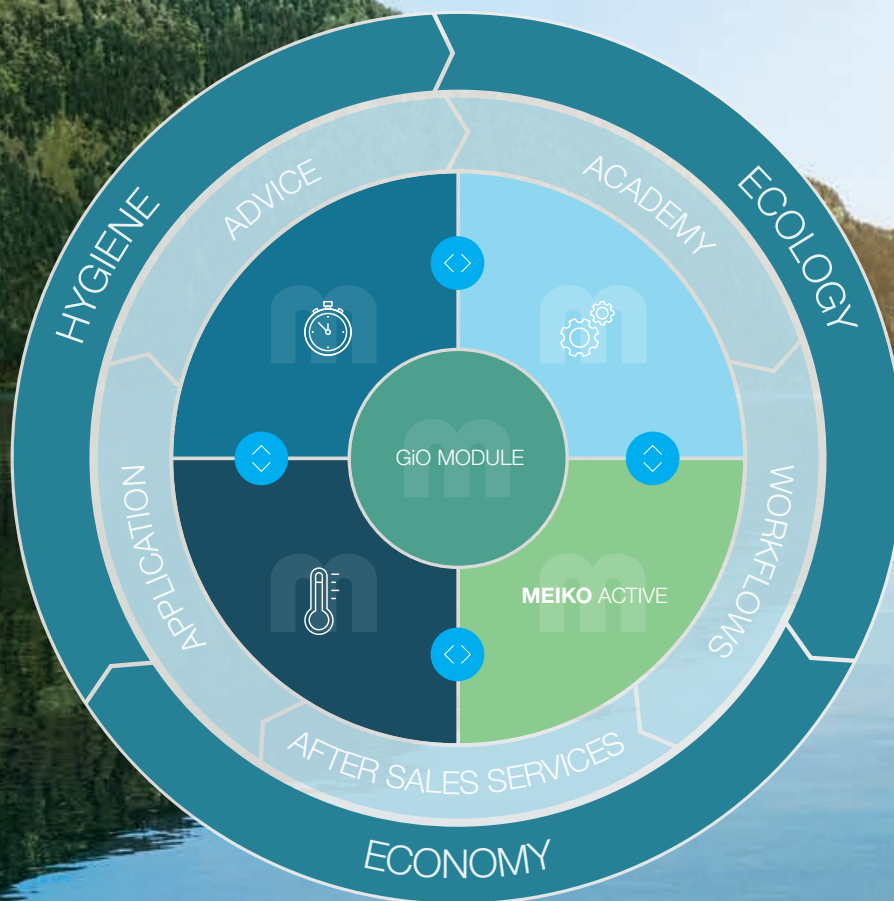


Expert advice on dishwashing areas

We know better than anyone that no two kitchens are the same, that every millimetre counts and that washing is a tough job. Getting the planning of the dishwashing area right lays the foundation for perfect washing results and is what really makes the difference later on. A carefully thought-out dishwashing area results in short working distances and ergonomic conditions, reduces operating costs, protects the health of the staff and ensures hygiene safety.

MEIKO ACTIVE

The MEIKO Clean Solution Circle



Welcome to the world of *MEIKO Clean Solution*: solutions for the entire warewashing process with a full service spectrum from A to Z. This world comprises 8 elements which are brought together in the *MEIKO Clean Solution Circle*.

The *MEIKO Clean Solution Circle* forms the heart of MEIKO and illustrates our comprehensive approach to the warewashing process. With over 90 years' experience, we know this process inside out and have distilled its essence with the aid of 8 parameters which epitomise the revolutionary power of MEIKO. We bring together all aspects of the process at the heart of any food service business: washing. If there are problems with this process, the whole business will soon grind to a halt. Reliable machines and processes are more important than ever for the industry, to say nothing of hygiene safety. The *MEIKO Clean Solution Circle* represents our holistic

approach to the washing process and all of the relevant factors with everything supplied from a single source. At the centre of the system is 'Sinner's circle': time, temperature, mechanical elements and chemicals. But our solution goes further. We will plan your dishwashing area in an efficient, ergonomic and economical manner, help you with any technical issues and ensure that everything keeps working smoothly for years to come. And we will make sure that your staff are always up to date with the latest training. We focus on cost-effectiveness, hygiene and environmental protection to help you get the most out of your warewashing technology. A true all-in-one package.

Sustainability

A state-of-the-art warewashing process

When it comes to washing chemicals, it's not simply a case of 'the more the better'. It's much more complex than that: highly effective ingredients need to be precisely adapted to the washware, the warewashing technology, the local water conditions and the type of soiling. Quite the challenge. But it's worth the effort! The correct selection and dosing of chemicals will ensure flawless shine, outstanding hygiene for patrons, low operating costs and warewashing technology that keeps working perfectly for years to come.

To put it briefly, chemicals are a science in themselves and are constantly undergoing further development. Our portfolio is based on decades of experience and passion for quality without compromise. To protect our environment, we avoid using chlorine, phosphates, NTA or EDTA as far as possible. Making washware hygienically clean, giving it a sparkling shine, protecting it against residues and discolouration: washing chemicals have to tick a lot of boxes. And ultimately, they even influence the longevity of your machines.

MEIKO ACTIVE

The chemical portfolio

We avoid using chlorine and phosphates as far as possible across the *MEIKO ACTIVE* portfolio, and we do not use EDTA or NTA as substitutes in any of our products. Our highly effective active ingredients still ensure sparkling results, and we know that we're doing our bit to help the environment. Perfect!

Standard products

For virtually all applications and water hardness levels

Nothing comes closer to your diners than your glasses, dishes and cutlery – whether it is silverware in a Michelin-starred restaurant or reusable cups at a music festival. The wide-ranging nature of the world of washware calls for bespoke washing chemicals.

That's why the *MEIKO ACTIVE* range contains detergents and rinse aids for virtually all applications, all types of washware, all degrees of soiling and all water conditions.

You will always receive the right combination of detergent and rinse aid for your warewashing technology, your needs and your requirements on site. As always, our focus is on conservation of resources, operating costs and our environment.



ECOLABEL-certified products

Detergents and rinse aids with Nordic Swan certification

Highly concentrated detergent action and maximum environmental compatibility are not mutually exclusive. Want proof? Try the *MEIKO ACTIVE* products with the Nordic Swan certificate.

No chlorine, no phosphate, no NTA, no EDTA – in return excellent cleaning properties and respect for the environment. The *MEIKO ACTIVE* ECO series combines the best of both worlds and reduces environmental impact while delivering shine and hygiene, even in the case of stubborn residues and discolouration. So there is no need for you to compromise.





Special applications

A solution for any situation

Highly delicate wine glasses, aluminium cutlery, plastics, the perfect head on a beer, extremely stubborn residues or persistent discolouration caused by coffee, tea or food – day-to-day life in a professional food service business involves an endless list of applications, needs, shapes and materials.

Luckily, solutions for all of these challenges can be found in the *MEIKO ACTIVE* tool box. Because dealing with unusual situations is our bread and butter.



MEIKO ACTIVE

The chemical portfolio



Dosing technology

Turning 'safe' into 'even safer'

Selecting the right washing chemicals and dosing them correctly are two sides of the same coin. These two factors must be aligned precisely in order to ensure outstanding washing results and hygiene. Clever dosing technology is the key to success. The machine informs you in plenty of time when chemicals are running low in order to prevent wash cycles being run without chemicals and posing a hygiene risk.

And best of all: purchasing dosing and warewashing technology from a single source makes your life easier – no need to coordinate service calls from different manufacturers, no problems with compatibility. We'll take care of everything – quickly, reliably and with a holistic approach.

Surrounding products

Pre-rinsing and more

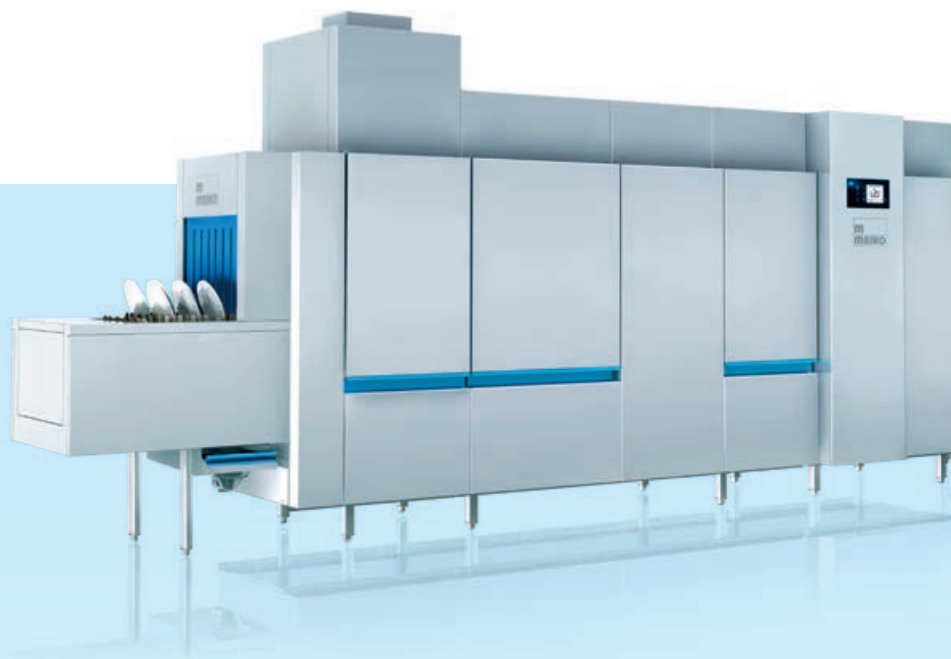
Excellent rinse aids and detergents are the gold standard when it comes to uncompromising hygiene and brilliant results in the dishwashing area. But day-to-day life in a food service business often calls for other chemicals as well.

MEIKO ACTIVE covers all aspects of professional washing. From limescale on surfaces and inside the warewashing technology to electrolytic silver cleaning in immersion baths – with MEIKO ACTIVE you will be ready for anything. Furthermore, the clever use of our surrounding products can help to preserve the value of your warewashing technology and save you money on every wash cycle by lowering your operating costs.





MEIKO *GiO MODULE*, fully integrated here in the plinth of the *M-iClean U*. MEIKO's *GiO* technology is available for many MEIKO machines.



Water treatment

Integrated sustainability

Save on chemicals with the *GiO MODULE*

Greater efficiency, lower operating costs: the MEIKO *GiO MODULE* reduces consumption of washing chemicals considerably. The technology for demineralising wash water was first developed by MEIKO in 2006 and brought about a revolution in water treatment. It removes almost all foreign substances, minerals, bacteria and viruses from the fresh water supply. MEIKO *GiO MODULE* technology provides high-purity wash water and thus brilliant washing results, without the need for polishing. At the same time, the treated water helps to save valuable detergents and rinse aids.

MEIKO CONNECT

Hygiene monitoring made easy with the smart cockpit for your dishwashing machine

MEIKO *CONNECT* makes it easier to monitor your professional kitchen. Now you can use your smartphone to record machine and hygiene data from your MEIKO dishwashing machine – it's easy and convenient.

Scan the QR code to get started



MEIKO CLEAN SOLUTION

Service packages

Become part of the *MEIKO ACTIVE* community and benefit from a value proposition encompassing machines, services and chemicals. Three packages, one solution and full cost transparency – all from a single source.



When you choose *MEIKO ACTIVE*, you will receive the Basic package automatically.

From now on, your company can rely on premium technology, top service and highly effective washing chemicals. Whatever you need, we are here to help.

MEIKO CLEAN SOLUTION Basic

Looking for a bit more? *MEIKO CLEAN SOLUTION Advanced* offers extra attractive services and staff training with real added value.

This allows you to get even more out of our partnership and supplements the benefits that you get from the *MEIKO ACTIVE* Basic package.

MEIKO CLEAN SOLUTION Advanced

All in! *MEIKO CLEAN SOLUTION Complete* goes one step further and contains all services of the wide-ranging value proposition encompassing chemicals, service, the Academy and consulting.

Choose a path without compromise and make your dishwashing area fit for the future. Everything from one source and with full cost transparency.

MEIKO CLEAN SOLUTION Complete



Details of the services in the different packages can be found in the separate service package overview.

The packages are made up of elements from the fields of service, Academy, sales and – of course – chemicals.



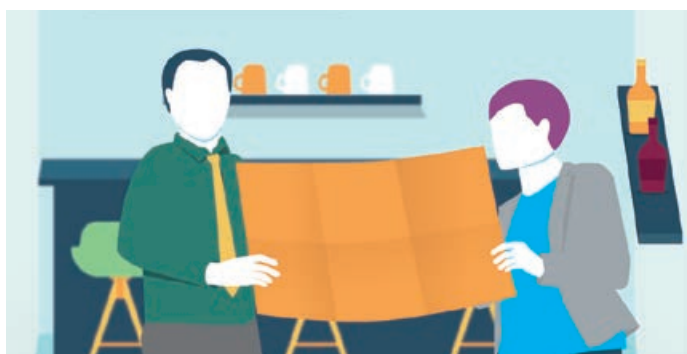
Chemicals

Whatever kind of washware you deal with in your company, *MEIKO ACTIVE* has the right solution: perfectly tailored to your requirements and always at the cutting edge of research in the field. All aspects of professional washing chemicals, from hygiene safety to environmental compatibility, are guaranteed.



Training

How can handling your warewashing technology correctly reduce your operating costs? How do the water conditions affect the washing results? How can you ensure hygiene during day-to-day work? So many questions – and the *MEIKO Academy* has the answers! It is our way of sharing our knowledge with your staff. And what's more, we can even provide compulsory training on subjects such as occupational safety so you don't have to organise it yourself – saving you time and, most importantly, money.



Consulting

Everyone knows what it's like to feel the pinch. In such cases, support from a reliable partner is worth its weight in gold.

Whether it's financing models for warewashing technology or the advantages of a subscription for stocking up on washing chemicals: the *MEIKO Clean Solution Circle* offers numerous attractive options to make sure you never miss out. For over 90 years, our philosophy has revolved around long-lasting partnerships and a spirit of trust. That's a foundation you can build on.



Service

Regular maintenance and year-round service availability ensure that your machine does what it's supposed to – make your life easier.

Our service teams will do whatever they can to help you, wherever you are. We take a proactive approach to prevent problems occurring in the first place. Service sorts the wheat from the chaff, and ultimately you are the one who benefits.

